

MANUFACTURER	VEHICLE	OE TYRE SIZE	RECOMMENDED TUBELESS VALVES
AUDI	TT	245/45 R17	TR414
	A6	255/50 R17	TR414
	A8	255/40 R19	TR414
	Q7	275/45 R20	TR414
MERCEDES BENZ	C180/C20Cdi/C200 K	195/65 R15	TR414
	C200 K sports coupe / CLK 320 Cabriolet	205/65 R15	TR414
FIAT	Palio Stile	165/80 R13	TR413/TR414
	Palio	175/65 R14	TR413/TR414
	Sienna	175/70 R13	TR413/TR414
	Sienna EX/ ELXPS / Sport / Patra EX	165/80 R13	TR413/TR414
	Linea	195/60 R15	TR413/TR414
FORD	Endeavour	245/70 R16	TR414
	Escort	175/80 R13	TR414
	Fiesta	175/65 R14	TR414
	Fusion	195/60 R15	TR414
	Ikon	175/70 R13	TR414
	Ikon NXT	175/65 R14	TR414
	ZXI / SXI	175/65 R14	TR414
GENERAL MOTORS	Astra / Club	185/60 R14	TR414
	Aveo	185/60 R14	TR414
	Chevrolet Optra	185/65 R14	TR414
	Chevrolet Tavera	205/65 R15	TR414
	Corsa / Swing / Sail	175/70 R13	TR414
	Optra Elite	195/55 R15	TR414
	Spark	155/70 R13	TR414
	Vectra	215/55 R16	TR414
	UVA	185/60 R14	TR414
	HYUNDAI	Accent-GLX/ GTX/ Tornado	185/60 R14
Accent - GVS / CRDi		175/70 R13	TR414
Elantra		195/60 R15	TR414
Getz		175/65 R14	TR414
i10		155/80 R13	TR414
i20		175/70 R14	TR414
Santro Xing		155/70 R13	TR413
Sonata Emberra		215/60 R16	TR414
SonataGS / Gold		195/65 R15	TR414
Terracan		235/75 R15	TR414
Tucson		215/65 R16	TR414
Verna		185/65 R14	TR414
HONDA		Accord V6 AT	215/60 R16
	Accord VTIL MT/AT	215/60 R16	TR414
	City / Old	175/70 R13	TR414
	City New	175/65 R14	TR414
	Civic	195/65 R16	TR414
	CRV/Old	215/65 R16	TR414
	CRV New	225/65 R17	TR414
	HINDUSTAN MOTORS	Ambassador	165/80 R15
Cedia		195/60 R15	TR414
Lancer		175/80 R13	TR414
Pajero		235/75 R15	TR414
Outlander		215/70 R16	TR414
MARUTI SUZUKI	Estillo	155/65 R13	TR413
	Swift LXi	165/80 R14	TR414
	Dzire	185/70 R14	TR414
	A-Star	155/80 R13	TR413
	Ritz	185/70 R14	TR414
	Grand Vitara	225/70 R16	TR414/TR418

	Swift VXi SX4 Wagon R VXi Zen Zen New SX4 ZXi	185/70 R14 195/65 R15 155/65 R13 145/70 R13 145/80 R12 205/60 R16	TR414 TR414 TR413 TR413 TR413 TR414
MAINI	Reva	145/70 R13	TR414
MAHINDRA & MAHINDRA	Scorpio CRDe Xylo	235/70 R16 215/75 R15	TR414/L TR413
RENAULT	Logan	185/65 R14	TR414
SKODA	Laura	195/65 R15	TR414
	Octavia	195/65 R15	TR414
	Octavia RS (P)	205/55 R16	TR414
	Superb	205/55 R16	TR414
	Fabia	185/60 R14	TR414
TATA MOTORS	Nano	135/70 R12 (F) 155/65 R12 (R)	TR438 TR438
	Indica	165/65 R14	TR414
	Indigo	175/65 R14	TR414
	Safari Dicor	235/70 R16	TR414
	Sumo Victa	215 R15	TR414
	Vista	175/65 R14	TR414
TOYOTA	Camry	205/65 R15	TR414
	Corolla	195/60 R15	TR414
	Innova	205/65 R15	TR413
VW (VOLKSWAGEN)	Passat/Jetta	205/55 R16	TR414

** The above valve guide is informative only and the exact sizes can be checked from vehicle manufacturers manual.

CONTACT INFORMATION

marketing@tritonvalves.com
Triton Valves Limited
Sunrise Chambers, 1st Floor,
22, Ulsoor Road, Bangalore - 560042
Tel : 080-25588965/66
www.tritonvalves.com

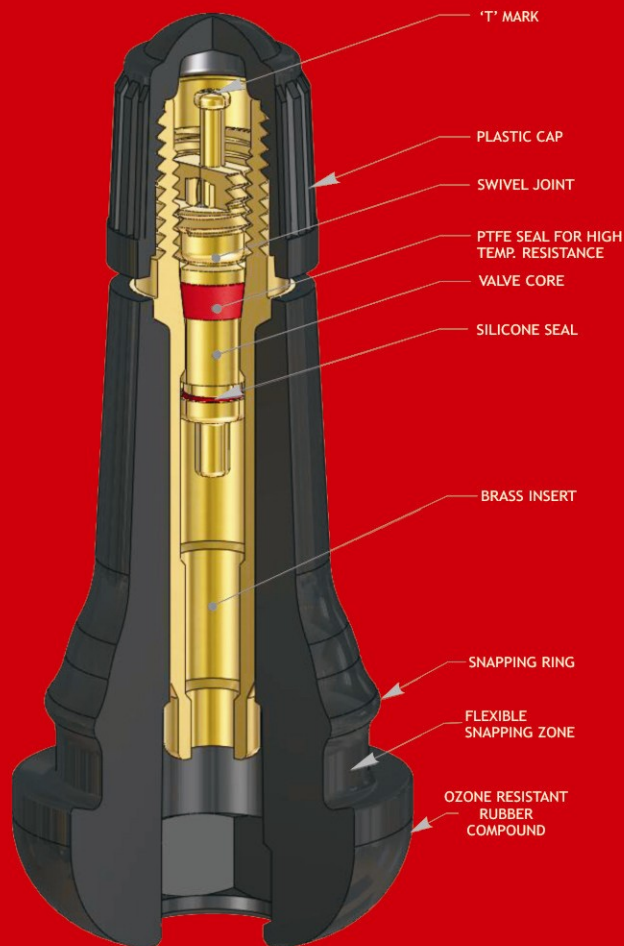


TRITON
VALVES LTD.

BROCHURE & PRODUCT GUIDE

TUBELESS SNAP-IN VALVES

FEATURES OF TRITON TUBELESS SNAP-IN VALVES



TRITON tubeless snap-in tyre valves are the best quality OEM specification valves. Made with specially formulated ozone resistant rubber, these valves are designed to withstand constant compression and exposure to heat, cold & moisture. TRITON valves are precision manufactured parts and conform to international standards of performance.

PRODUCT RANGE

➔ FOR 11.3 RIM HOLE



➔ FOR 15.7 RIM HOLE



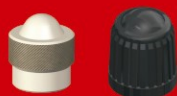
➔ FOR 8.8 RIM HOLE



FOR
TATA NANO

ACCESSORIES

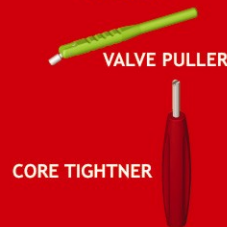
CAPS



CORES



TOOLS



RECOMMENDED MOUNTING PROCEDURE

- WET THE VALVE BODY WITH SOAP SOLUTION
- USE ONLY CORRECT VALVE MOUNTING TOOL. (Length 200mm)
DO NOT USE PLIERS
- INSERT THE VALVE INTO THE RIM HOLE FROM INSIDE THE WELL
- SCREW - ON THE VALVE MOUNTING TOOL ON THE EXTERNAL VALVE THREADS
- STOP PRESSING TOOL DOWNWARDS WHEN A 'SNAP' SOUND IS HEARD
- CHECK THE CORRECT FITMENT OF VALVE BY TILTING IN ALL DIRECTIONS

SAFETY INSTRUCTIONS

- FOR SAFETY REASONS ALWAYS CHANGE THE VALVE WHENEVER TYRES ARE CHANGED.
- FOR REMOVING THE VALVE FROM RIM CUT OFF THE VALVE AT VALVE RIM INTERFACE.
- MAXIMUM COLD INFLATION PRESSURE SHOULD NOT EXCEED 65psi.
- THESE VALVES ARE DESIGNED FOR SPEEDS NOT EXCEEDING 210km/hr.